



- Cut line
- - - - Crease downwards
- - - - Crease upwards
- - - -

**Tips:**

You need scissors or a good, sharp craft knife and a strong all-purpose glue.

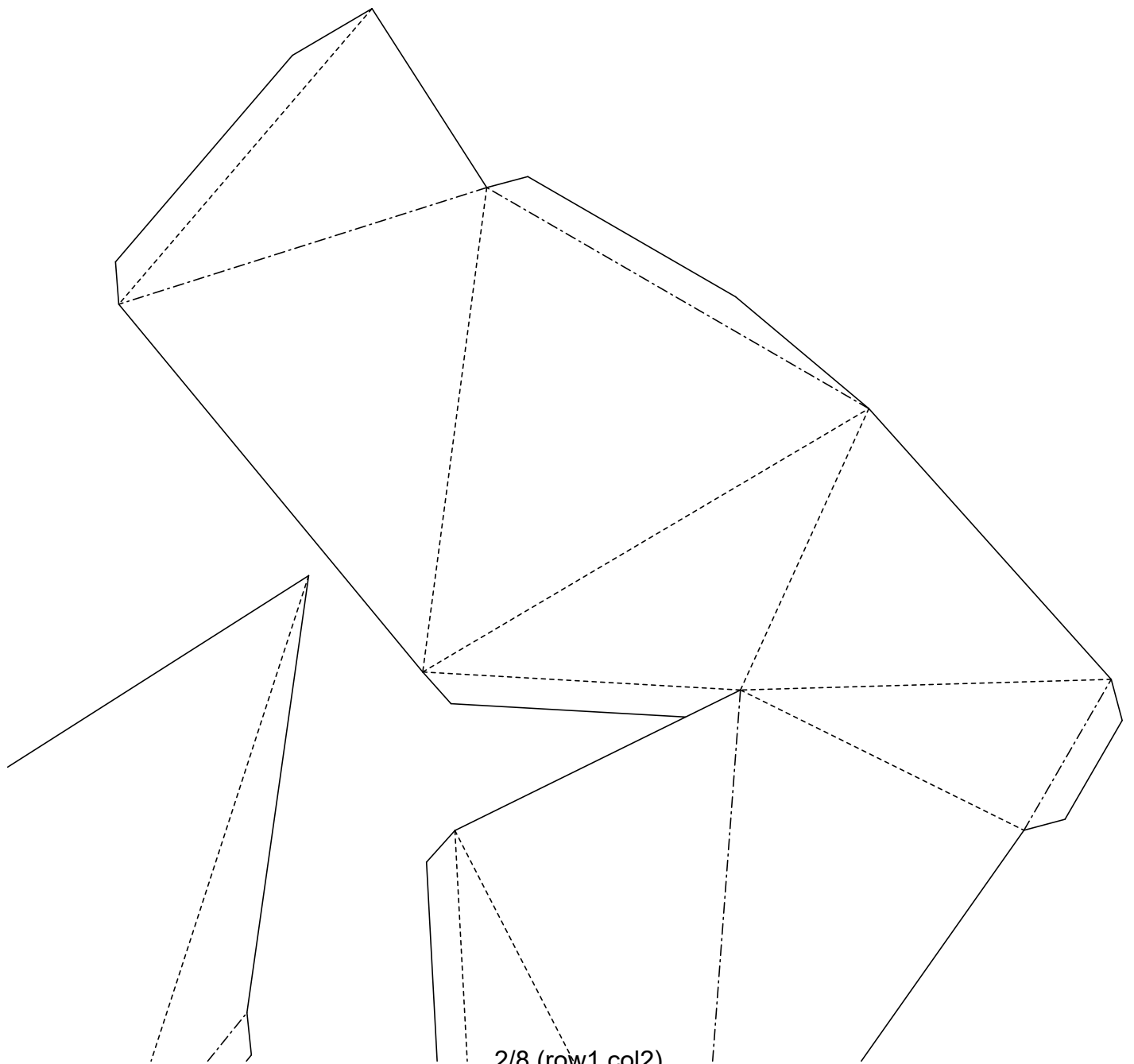
It's best to use thick paper or thin card to print onto, we have found 200 gsm to be particularly good. You can also print out these pages on some regular print paper, and subsequently glue the pages onto some cardboard.

Start by gluing the printed a4 pages together first to form one big piece of paper.

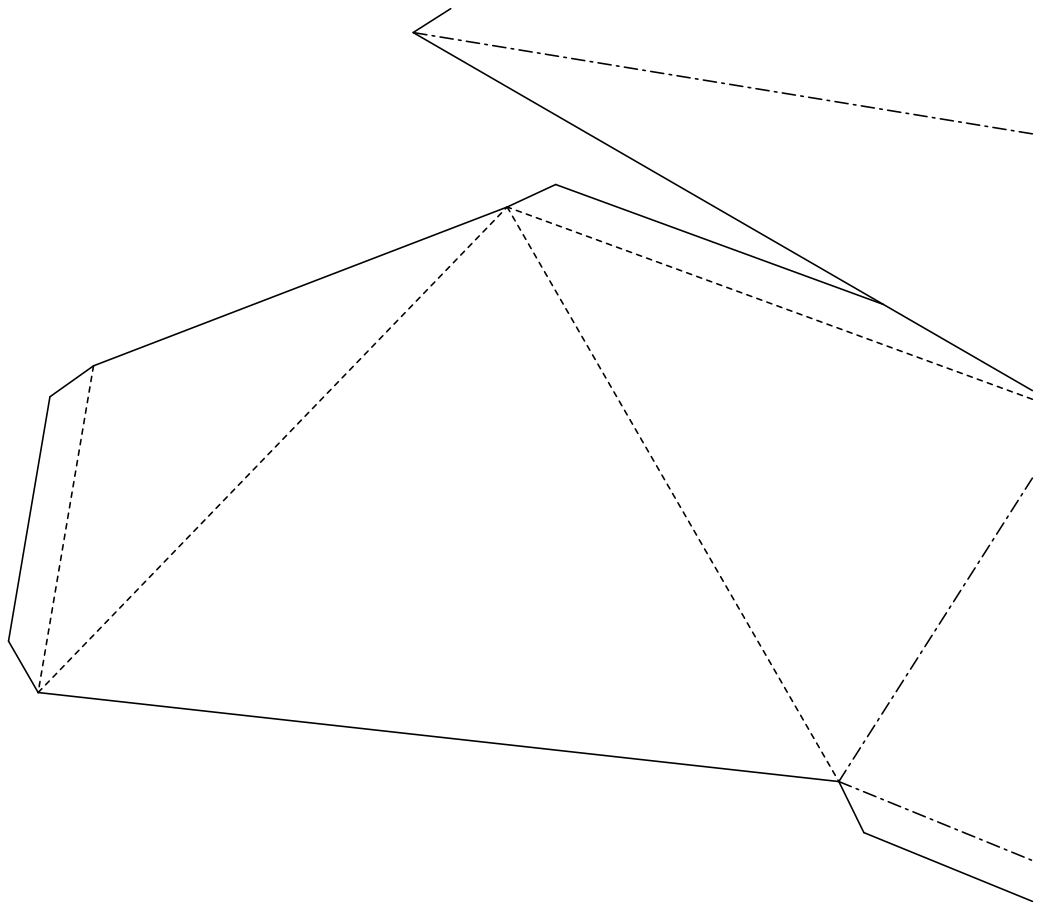
Use a dried-up ballpoint pen, stencil pen, or another pointed object and a ruler to score along the fold lines. This will create sharper, neater folds.

Before gluing, fold and crease along the fold lines and add curves where needed.

Use a toothpick to apply a thin layer of glue, for a neater finish.



2/8 (row1 col2)



3/8 (row2 col1)

